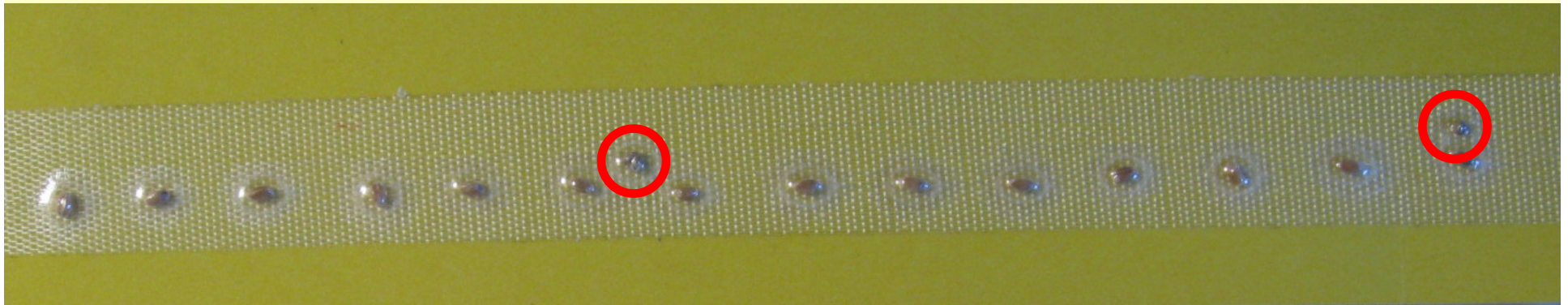


Starter Fertilizer Distribution Display

- How low can you go?
 - Distribution of phosphorus fertilizer material (liquid or dry) at a range of rates applied with the seed
- Situation
 - 1” spread (i.e. narrow shovel or disk opener)
 - Fertilizer placed directly with the seed
 - Good soil moisture - Medium soil texture
- Fertilizer must be within 1.5-2.0” of seed to get starter affect
- Caution
 - Starter fertilizer can reduce stand and yield depending on crop sensitivity, row spacing, fertilizer rate, fertilizer spread and soil moisture.

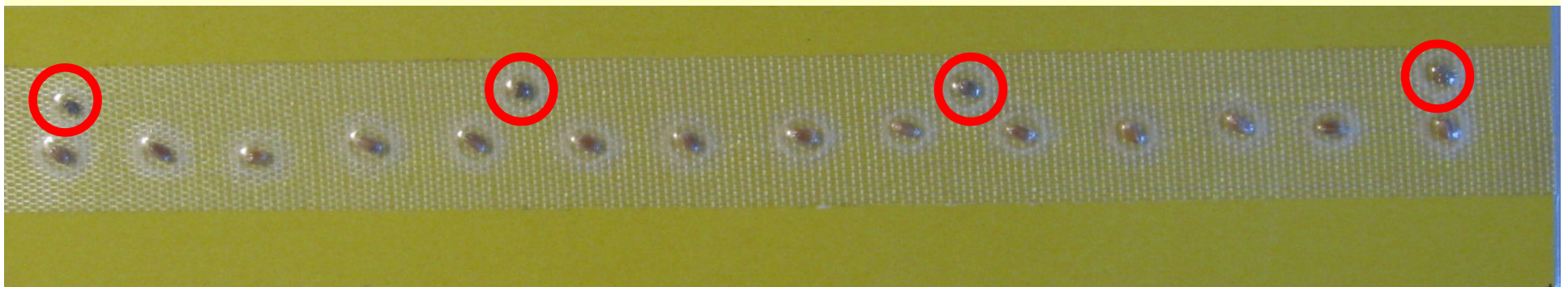
Dry Fertilizer Material

Wheat - 7" rows, 5 lb/a P_2O_5
10 lb/a MAP fertilizer
7.6" between MAP particles



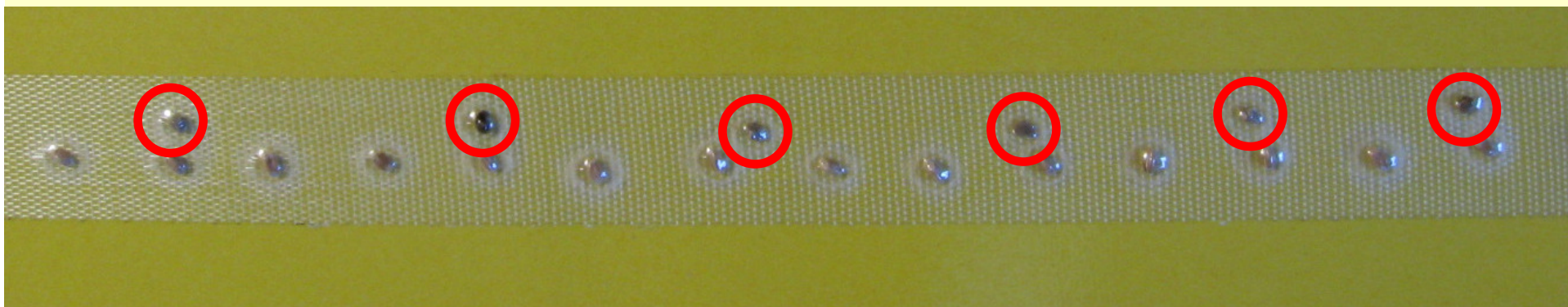
Wheat - 7" rows, 10 lb/a P_2O_5
19 lb/a MAP fertilizer
3.8" between MAP particles

AGVISE
LABORATORIES

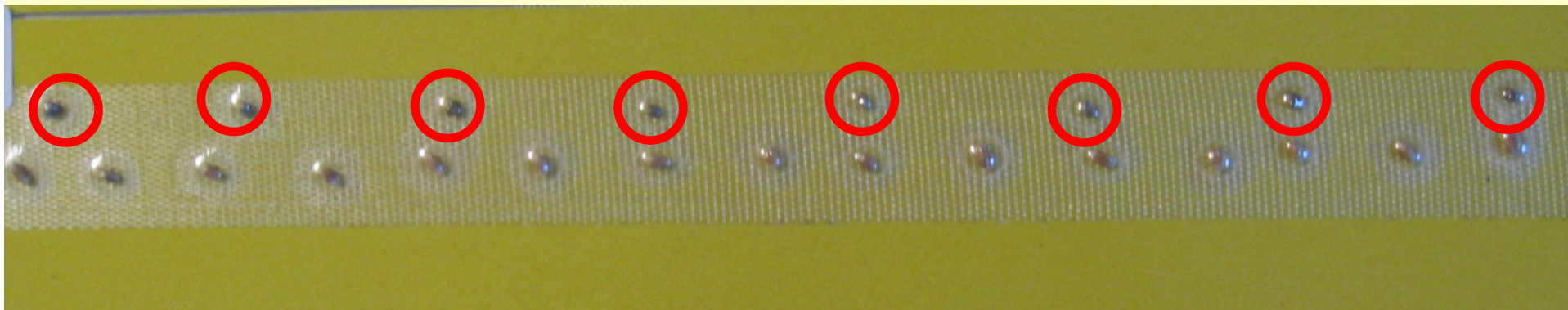


Dry Fertilizer Material

Wheat - 7" rows, 15 lb/a P_2O_5
29 lb/a MAP fertilizer
2.5" between MAP particles

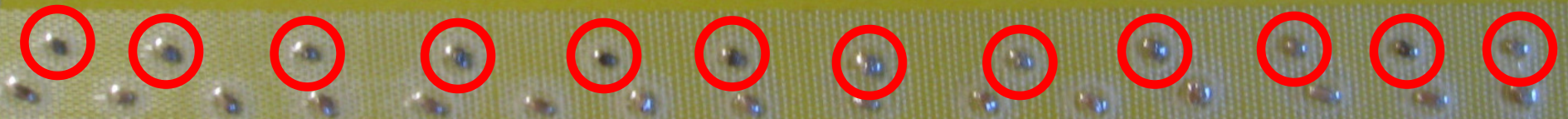


Wheat - 7" rows, 20 lb/a P_2O_5
38 lb/a MAP fertilizer
1.9" between MAP particles



Dry Fertilizer Material

Wheat - 7" rows, 30 lb/a P₂O₅
57 lb/a MAP fertilizer
1.3" between MAP particles



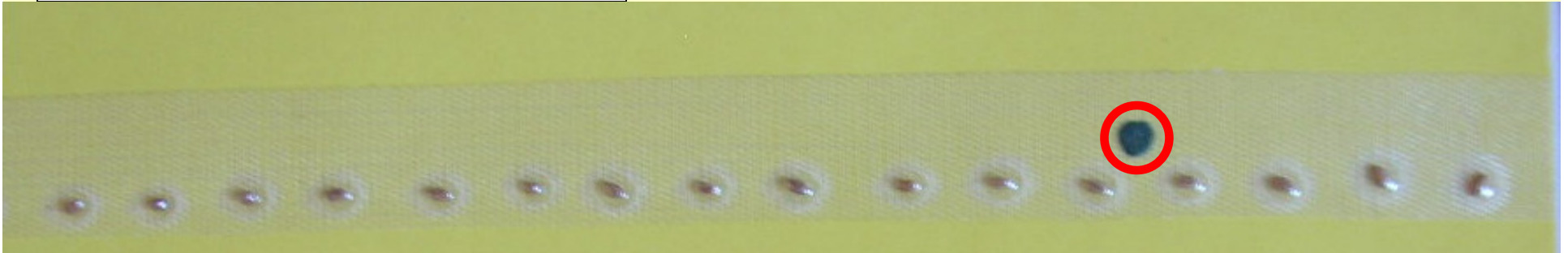
Caution – stand reduction may occur with sandy or dry soil

AGVISE
LABORATORIES

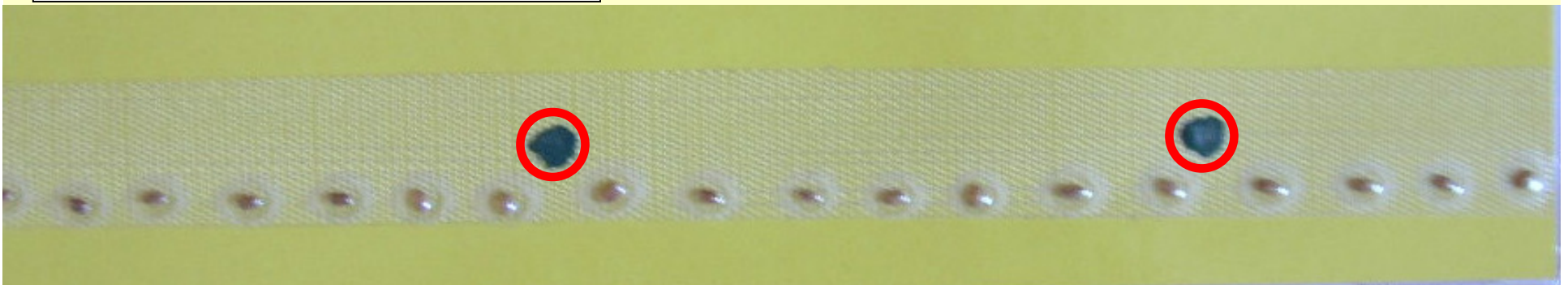
Liquid Fertilizer Material



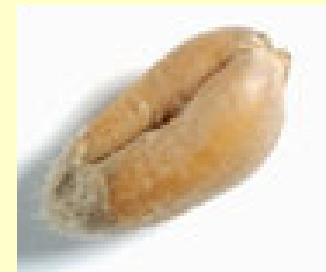
Wheat – 7" rows, 5 lb/a P₂O₅
1.25 gallons/acre 10-34-0
11.2" between drops of fertilizer



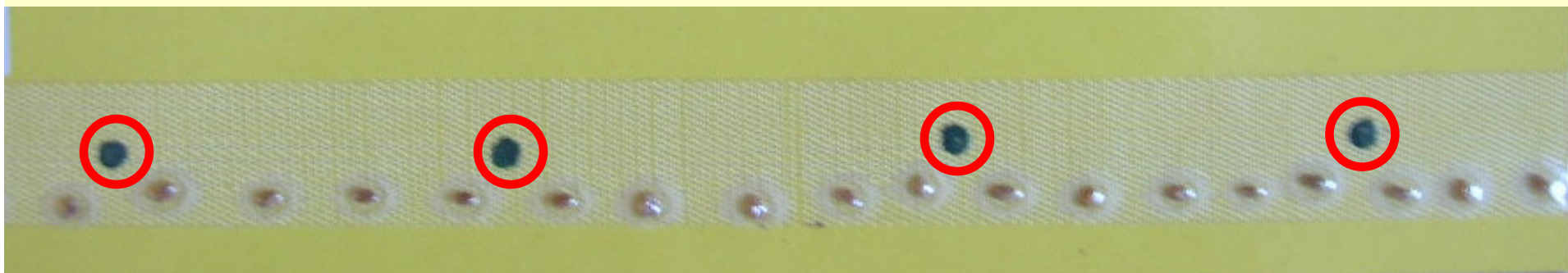
Wheat – 7" rows, 10 lb/a P₂O₅
2.5 gallons/acre 10-34-0
5.9" between drops of fertilizer



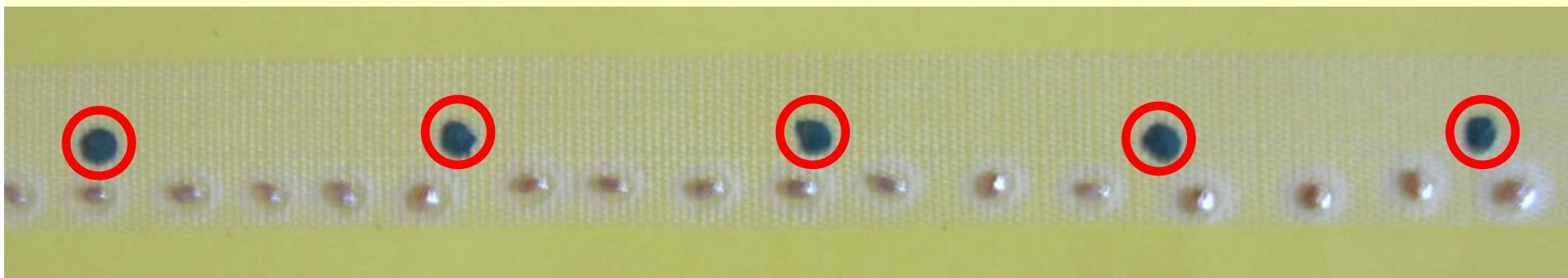
Liquid Fertilizer Material



Wheat – 7" rows, 15 lb/a P_2O_5
3.75 gallons/acre 10-34-0
3.7" between drops of fertilizer

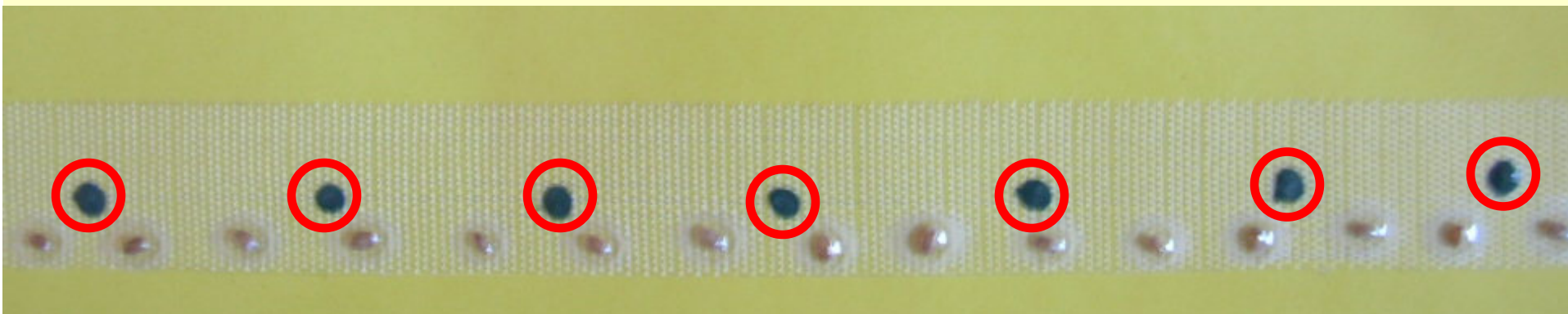


Wheat – 7" rows, 20 lb/a P_2O_5
5.0 gallons/acre 10-34-0
2.8" between drops of fertilizer



Liquid Fertilizer Material

Wheat – 7" rows, 30 lb/a P₂O₅
7.5 gallons/acre 10-34-0
1.9" between drops of fertilizer



AGVISE
LABORATORIES