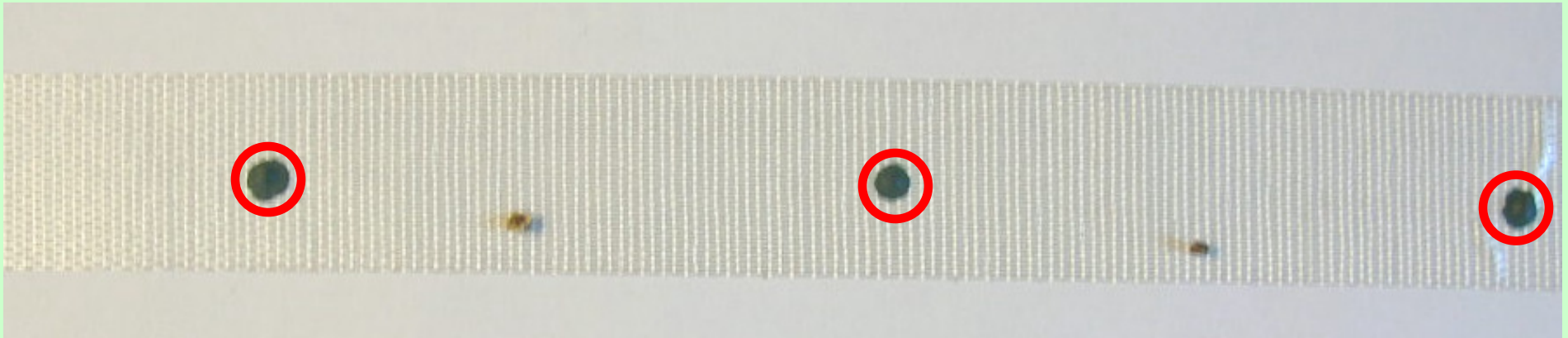


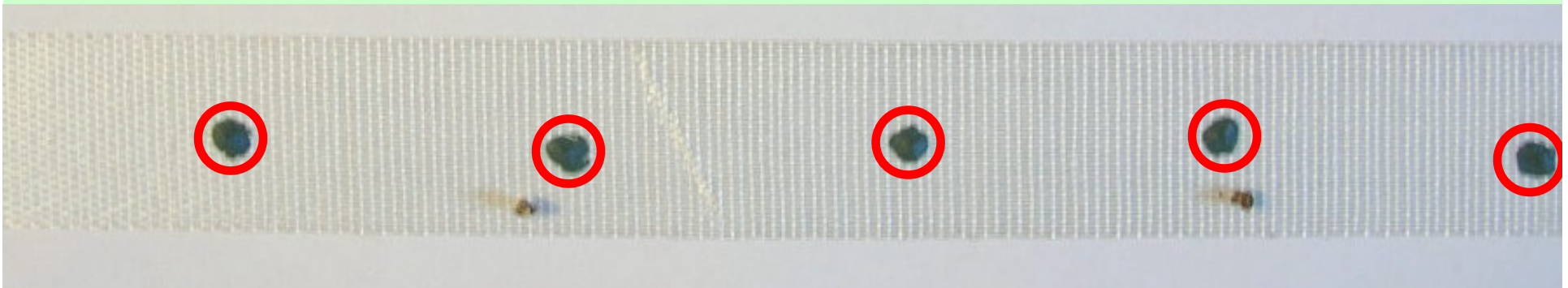
Starter Fertilizer Distribution Display

- How low can you go?
 - Distribution of phosphorus fertilizer material (liquid or dry) at a range of rates applied with the seed
- Fertilizer must be 1.5-2.0” from seed to get starter affect
- Situation
 - 1” spread (i.e. narrow shovel or disk opener)
 - Fertilizer placed directly with the seed
 - Good soil moisture with a medium soil texture
- Caution
 - Starter fertilizer can reduce stand and yield depending on crop sensitivity, row spacing, fertilizer rate, fertilizer spread and soil moisture.

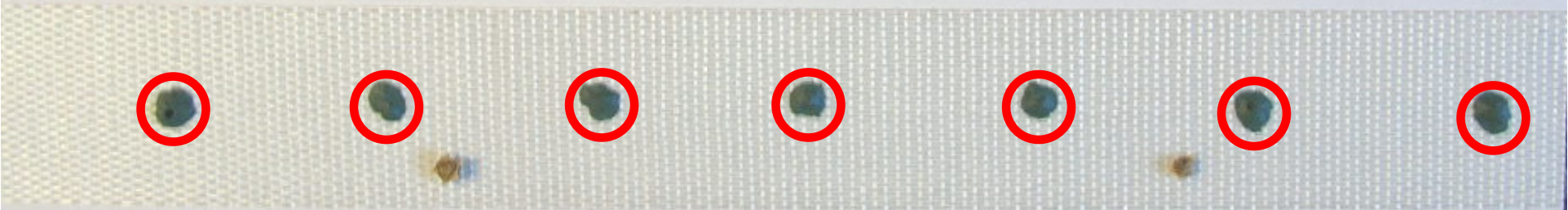
Sugarbeets (5" spacing) – 22" rows, 4 lb/a P₂O₅
1.0 gallons/acre 10-34-0
4.5" between drops of fertilizer



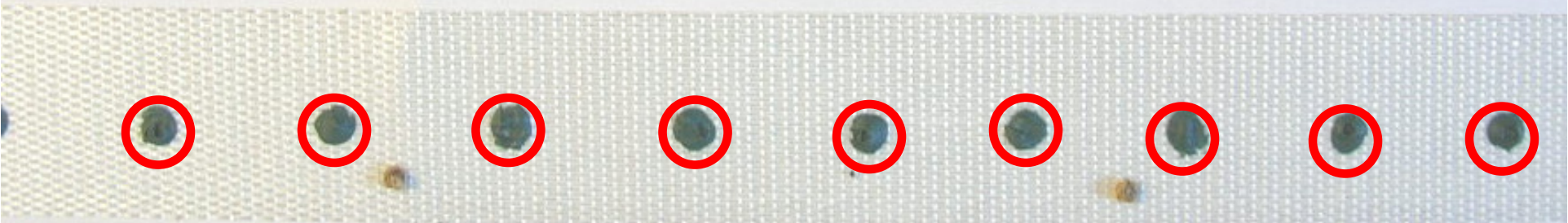
Sugarbeets (5" spacing) – 22" rows, 8 lb/a P₂O₅
2.0 gallons/acre 10-34-0
2.25" between drops of fertilizer



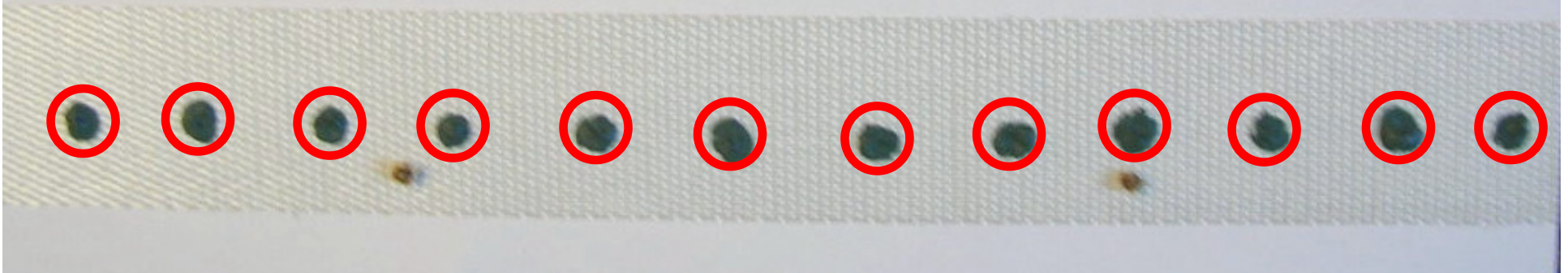
Sugarbeets (5" spacing) – 22" rows, 12 lb/a P₂O₅
3.0 gallons/acre 10-34-0
1.5" between drops of fertilizer



Sugarbeets (5" spacing) – 22" rows, 16 lb/a P₂O₅
4.0 gallons/acre 10-34-0
1.12" between drops of fertilizer



Sugarbeets (5" spacing) – 22" rows, 20 lb/a P₂O₅
5.0 gallons/acre 10-34-0
0.9" between drops of fertilizer



Caution – stand reduction may occur

