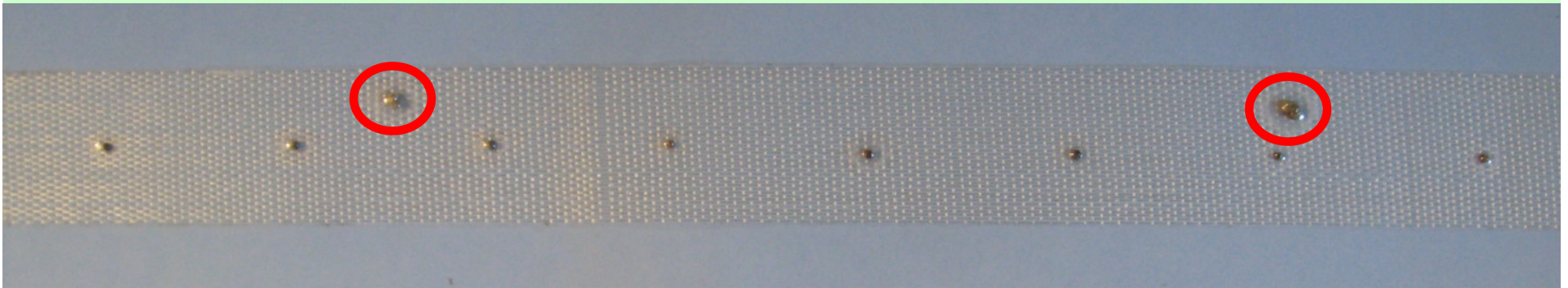


Starter Fertilizer Distribution Display

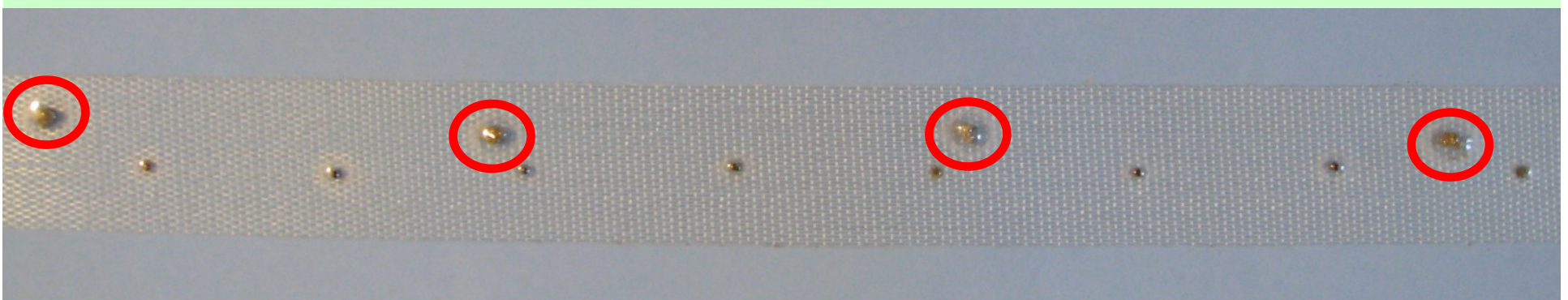
- How low can you go?
 - Distribution of phosphorus fertilizer material (liquid or dry) at a range of rates applied with the seed
- Fertilizer must be 1.5-2.0” from seed to get starter affect
- Situation
 - 1” spread (i.e. narrow shovel or disk opener)
 - Fertilizer placed directly with the seed
 - Good soil moisture with a medium soil texture
- Caution
 - Starter fertilizer can reduce stand and yield depending on crop sensitivity, row spacing, fertilizer rate, fertilizer spread and soil moisture.

Dry Fertilizer Material

Canola - 7" rows, 5 lb/a P_2O_5
10 lb/a MAP fertilizer
7.6" between MAP particles



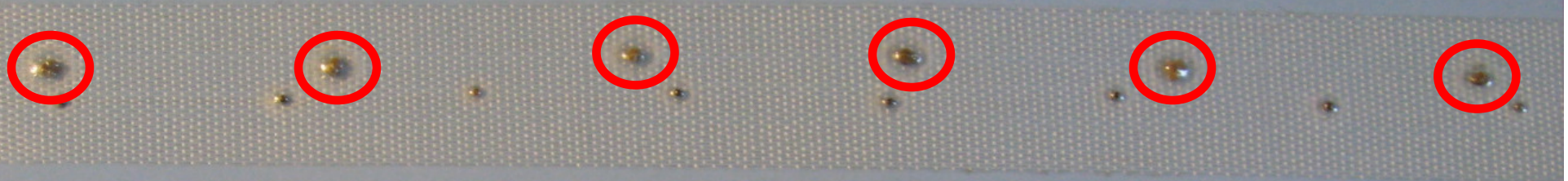
Canola - 7" rows, 10 lb/a P_2O_5
19 lb/a MAP fertilizer
3.8" between MAP particles



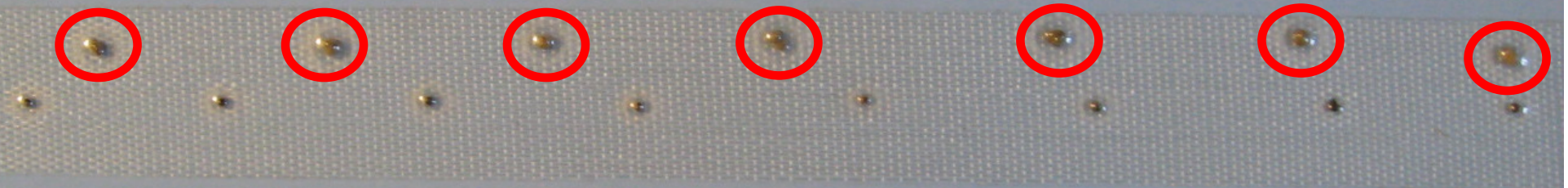
Dry Fertilizer Material



Canola - 7" rows, 15 lb/a P_2O_5
29 lb/a MAP fertilizer
2.5" between MAP particles



Canola - 7" rows, 20 lb/a P_2O_5
38 lb/a MAP fertilizer
1.9" between MAP particles



Dry Fertilizer Material



Canola - 7" rows, 30 lb/a P₂O₅
57 lb/a MAP fertilizer
1.3" between MAP particles

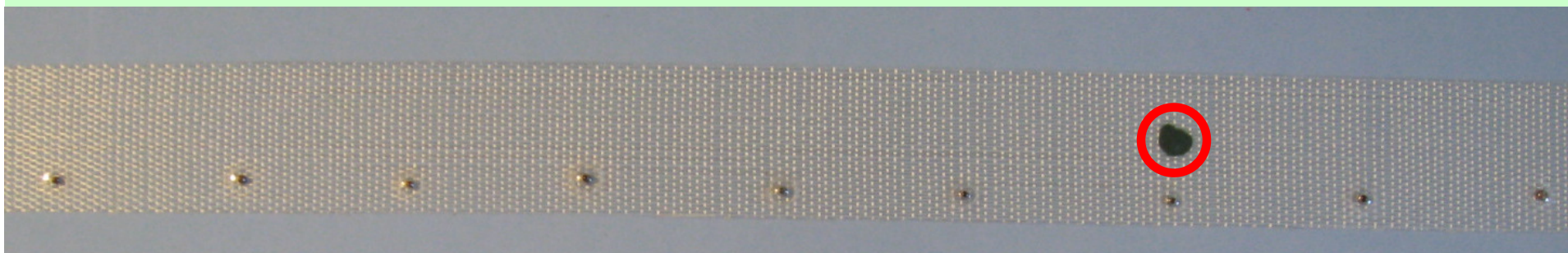


Caution – stand reduction may occur with sandy or dry soil

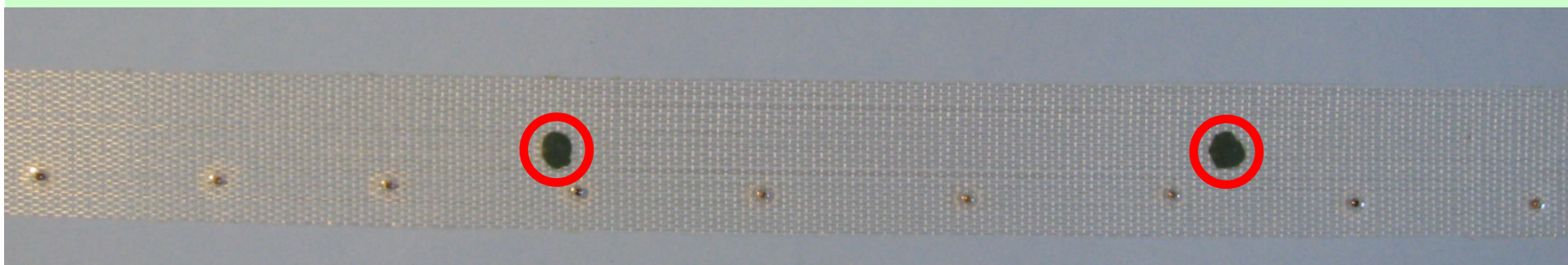
Liquid Fertilizer Material



Canola – 7" rows, 5 lb/a P₂O₅
1.25 gallons/acre 10-34-0
11.2" between drops of fertilizer



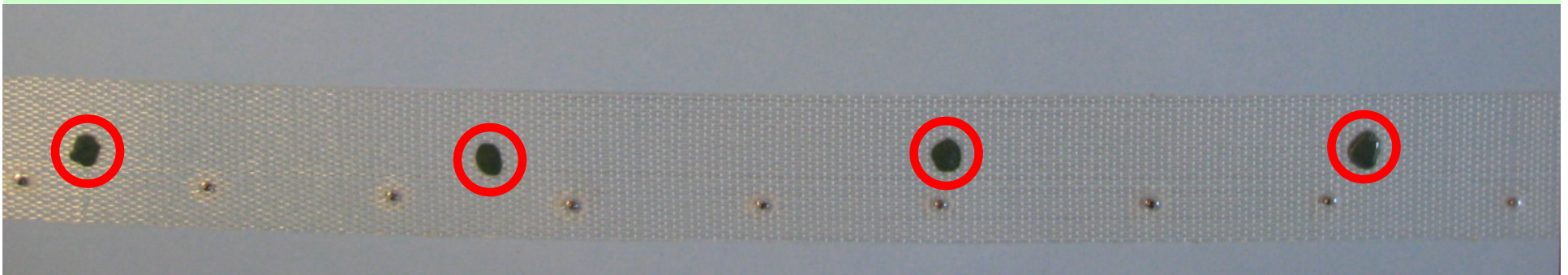
Canola – 7" rows, 10 lb/a P₂O₅
2.5 gallons/acre 10-34-0
5.9" between drops of fertilizer



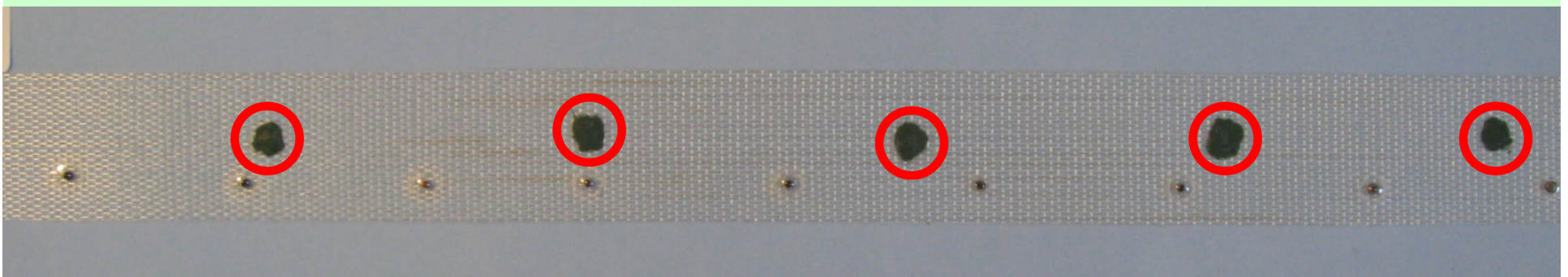
Liquid Fertilizer Material



Canola – 7" rows, 15 lb/a P₂O₅
3.75 gallons/acre 10-34-0
3.7" between drops of fertilizer



Canola – 7" rows, 20 lb/a P₂O₅
5.0 gallons/acre 10-34-0
2.8" between drops of fertilizer



Liquid Fertilizer Material



Canola – 7” rows, 30 lb/a P₂O₅
7.5 gallons/acre 10-34-0
1.9” between drops of fertilizer

Caution – stand reduction may occur



AGVISE
LABORATORIES